

OUT OF THE BLUE

**COMPAGNIE
BODECKER
& NEANDER**

with : Wolfram von Bodecker and Alexander Neander / **Director** : Lionel Ménard
Light : Didier Brun / **Music** : Franck Gervais / **Props** : Magali Leportier

« one of the best shows of the year »

Berliner Morgenpost

« a fantastic evening full of humor, emotion and beauty »

Neue Ruhr Rhein Zeitung

« a cinematic seeming play with visual magic effects
humor and fantasie around a double bass case »

Berliner Tagesspiegel

The plane crashed onto wasteland... Happy to survive, the double bass player opens the undamaged double bass case to reunite himself with his beloved instrument – and is confronted with a stowaway who has hidden inside the case.

But where is the double bass? A desperate yet comical search begins, often crossing the boundaries between reality and imagination.

The two mimes Alexander Neander and Wolfram von Bodecker take us on a vividly pictured journey through constant scene changes: An office is a boat, is a piano, is a ...

The story is composed of a sequence of episodic tales which emerge fluently from one another. But still the instrument remains missing. Eventually a mysterious little book seems to solve their puzzle. Will they be able to use the correct spell?

In the end, the musician will have to choose between the reunion with his beloved instrument and the good company of his new friend, the stowaway – who couldn't bring back the instrument but showed him the essential qualities of life.

This extraordinary performance offers a wide range of acting techniques such as 'théâtre noir', object theatre and some well-placed magical effects, always presented with the most refined art of mime.



COMPAGNIE BODECKER & NEANDER



BIOGRAPHIES :

Wolfram von Bodecker –mime

Born in Schwerin (Germany), Bodecker initially studied the art of magic with professional magicians and toured with his own magic show. In 1992 he moved to France and completed practical training at the prestigious international mime school “Ecole Internationale de Mimo-drame de Paris, Marcel Marceau“. After receiving a rarely awarded diploma in 1995, he was engaged by Marcel Marceau for the theatre productions *Un soir à l’Eden*, *Le Manteau*, *Le Chapeau Melon* and *Les contes fantastiques*, touring world-wide with the master of pantomime.

Alexander Neander –mime

Born in Paris and raised in Stuttgart, Neander started taking mime theatre classes at the age of twelve. He furthered his studies with specialized training in “Commedia dell’arte“ and “black light theatre“. He also graduated from the “Ecole Internationale de Mimodrame de Paris, Marcel Marceau“. He has been a member of the Compagnie Marcel Marceau since 1995 and has been working with his “maestro“ as a personal assistant on stage and during his soloist world tours. Together with Wolfram von Bodecker, Alexander Neander founded his own theatre company in 1996. Their first productions *Silence* and *Out of the Blue* won them great acclaim. Music proves to be the central source of inspiration for their stage plays. In collaboration with famous orchestras they have created several “visual concerts“, staging contemporary music. The universal language of their art appeals to the most diverse audiences all over the world. They have toured Europe as well as South America, China, Japan and Taiwan. In 2003, they celebrated their U.S. début with the Stuttgart Chamber Orchestra in New York.

Lionel Ménard – director

Born 1968 in Bordeaux, Ménard likewise attended Marceau’s mime school. He acted with Marcel Marceau and Patrick Henniquau and worked as an assistant producer for Marceau, Eric Besnard, Alexandre Jodorowski, Michael Jackson and Jean-Paul Goude. As an actor for cinema he appeared in Claude Lelouch’s *Genre Humain*.

He has been commissioned as a director of numerous theatre and pantomime plays and has worked with detainees of the penal institution de Fresnes. He has also lectured at the Ministry of Performing Arts in Cuba, the AFFA and the Alliance Française in Argentine, the Cap Gemini Université, UFCV France and Terre d’asile en France. From 2002 to 2005, he was a member of the Company Philippe Genty and toured with the production *Ligne de fuite*.

OUT OF THE BLUE

Technical Rider

COMPAGNIE Bodecker&Neander:

- Two mimes (Wolfram v. Bodecker & Alexander Neander) and one technician
- During of the show: 1h20mn

SCENOGRAPHY:

- The set it's composed by one bass case on the floor and two parachutes cloth hanging on the flybar
- the cie will bring two profiles for spécial effects.
- For facilities reasons, the lighting and the sound desk will be set on the back of the house, and will be prepared for one person manipulations.

STAGE

- Opening proscenium: 10 m
- Depth to apron to the background black curtain:15 m
- Higher from stage floor to flybars:8m
- Black marley on all the stage
- Stage curtain:
 - 1 house curtain(electrical or manualoperated)
 - 1 black backgroud curtain
 - 3 blacks borders
 - 4 sets of legs

LIGHTS

- Lighting house on dimmer
- 1 Memory console 48 chanel
- 43 Dimmers 2 or 3 KW
- 8 Profiles 1 KW type Robert Juliat 614
- 26 PC 1KW
- 2 PC 2 KW
- 6 PAR can 64 with NSP lamps (CP 61)
- 7 PAR can 64 CP 62
- 5 Low Tension 500 W or PAR can 64 with VNSP lamps (CP 60)

Filters:

*****	PC 1KW	DEC 1KW	PAR	B-T 500W
205	13			
206			1	
201	13	2	5	
203		4		
120			6	
116		1		
154			1	1
157		1		2
148				2
142	2			

SOUND

- 1 mixing sound 8-4-2
- 1 speakers system adapted for the house
- 2 500 W background speakers
- 1 intercom system stage-lighting control

DRESSING-ROOM

- 2 independants dressing-rooms with toilets and shower
- Bottles of water and fresh fruit available in the dressing-rooms
- 1 iron

PRODUCTION SCHEDULE AND STAFF CALLS

- Setting of the stage (black marley and stage curtain) before our arrivals.
- Setting of the light.
- The cie will arrive the morning of the show.
- Lighting focus: 1 lighting elevator or Samia tower

SETTING AND FOCUS:

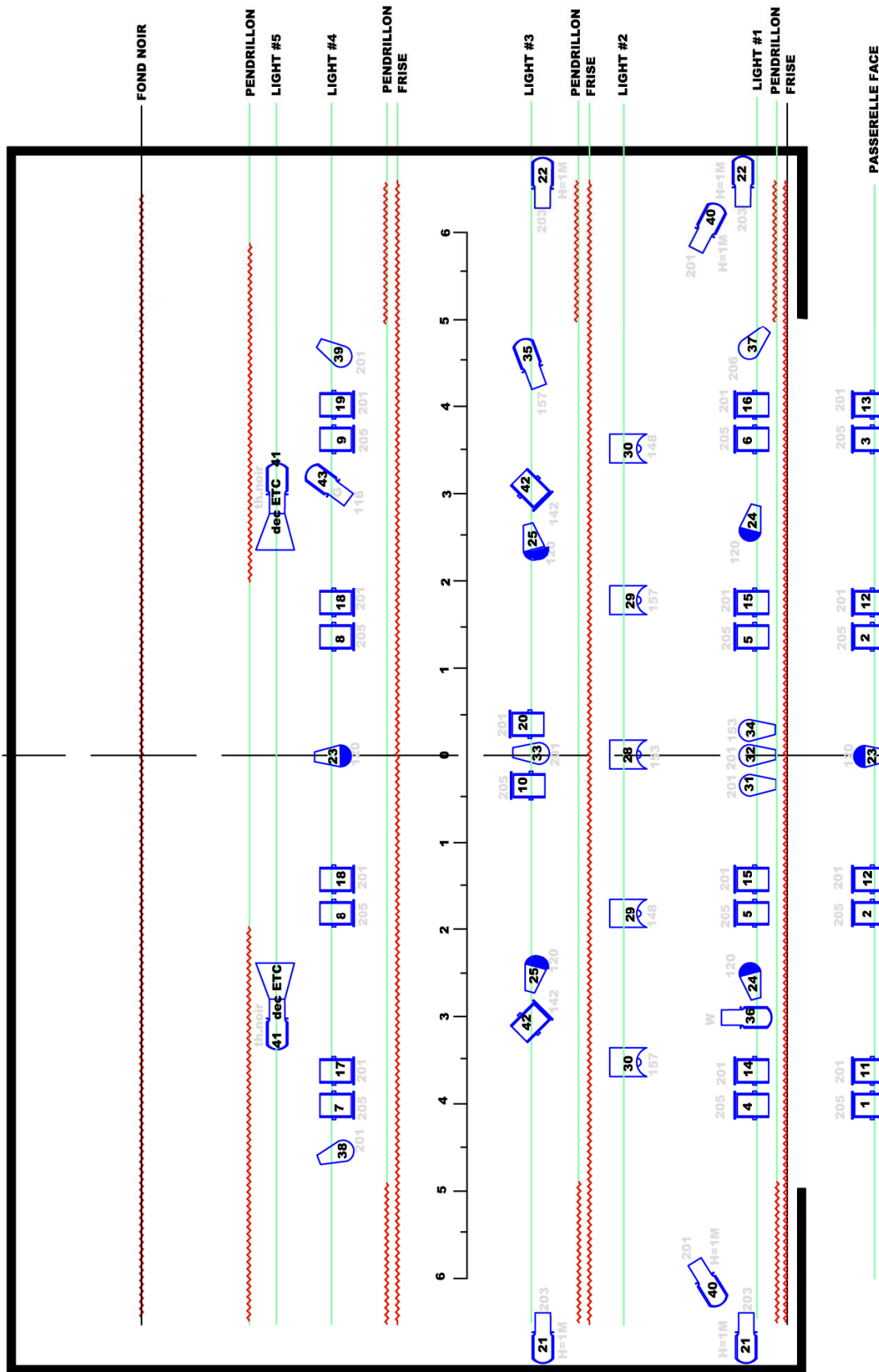
- (2 services of 4 hours)
- 1 light console technician
 - 2 Electricians
 - 1 Stage manager
 - 1 Sound console technician

SHOW :

- 1 light console technician
- 1 Stage manager
- 1 Sound console technician

BAGGAGE

1 double bass case:	190 x 50 x 75 cm	56Kg	
1 flightcase:	95 x 46 x 26 cm	25Kg	
1 flightcase:	95 x 46 x 26 cm	15Kg	
1 aluminium case:	55 x 36 x 24 cm	16Kg	all: 112Kg



Cie BODECKER / NEANDER		28 PC 1KW	5 B-T 250W
" OUT OF THE BLUE "			
ECLAIRAGE : DIDIER BRUN TEL : 0033.(0)6.10.83.05.65			
43 gradateur 3KW	1 PORTE-GOBO	2 DEC 750W ETC (CIE)	7 PAR 64 CP61
			6 PAR 64 CP62